

**RYOBI**

# **H8 SERIES**

THE ULTIMATE DOOR CLOSER



# H8 SERIES

## PRODUCT RANGE

### Standard Specification

Standard Application	Parallel Arm Application	Door Specification	
		Door Width x Height (mm)	Door Weight (Kg)
H8V	H8PV	1500×2700 ~2500×3500	140~350

### Corrosion Resistant

Standard Application	Parallel Arm Application	Door Specification	
		Door Width x Height (mm)	Door Weight (Kg)
H8VC	H8PVC	1500×2700 ~2500×3500	140~350

- H8 Series is equipped with torque adjustment function
- Non- Handed
- There is no hold open option available

## No. H8 P V C

- C: Corrosion Resistant Unit
- Torque Adj. Function
- P: Parallel Arm Application
- Door Closer Series Reference

## Features

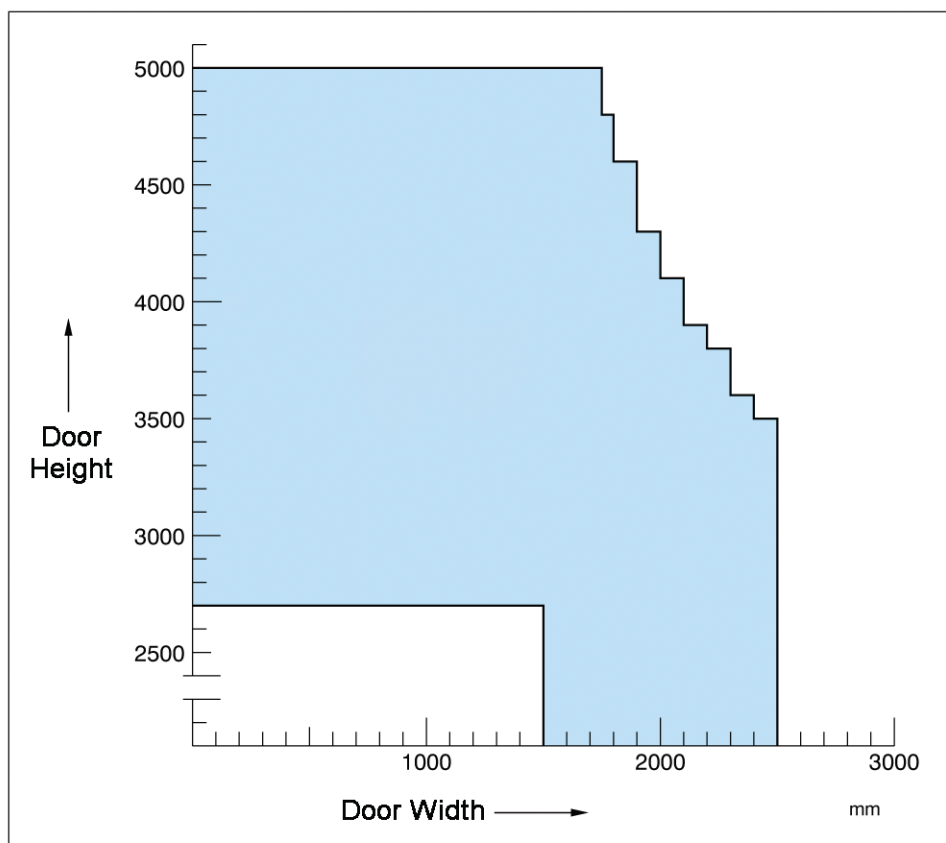
- Heavy Duty Door Closer ensuring heavy door latching with stable closing speed control
- Torque Adjustment function as standard feature
- Suitable for a wide range of doors  
(Width: 1500 - 2500 mm Weight: 140 - 350 Kg)
- For H8VC and H8PVC

Alumite treated body and stainless materials for arms.  
Passed 246 hours salt spray exposure test. (Ryobi Test)

H8 Series size comparison with conventional products



## APPLICATION

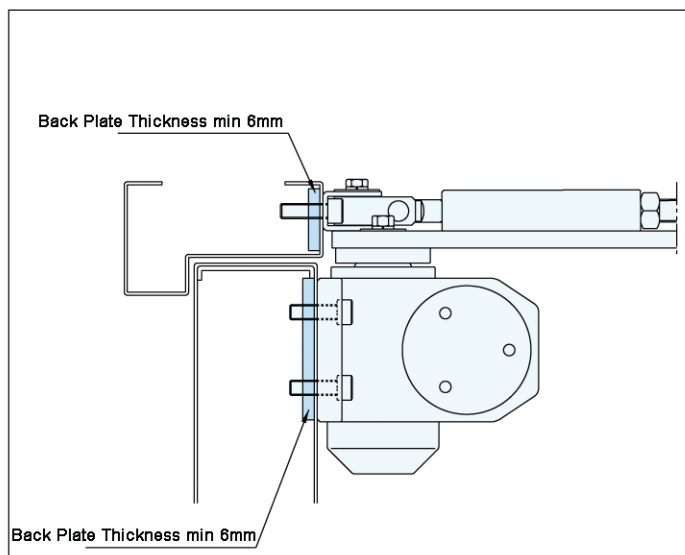


- The H8 SERIES Door Closer can be used for applications within the coloured area 

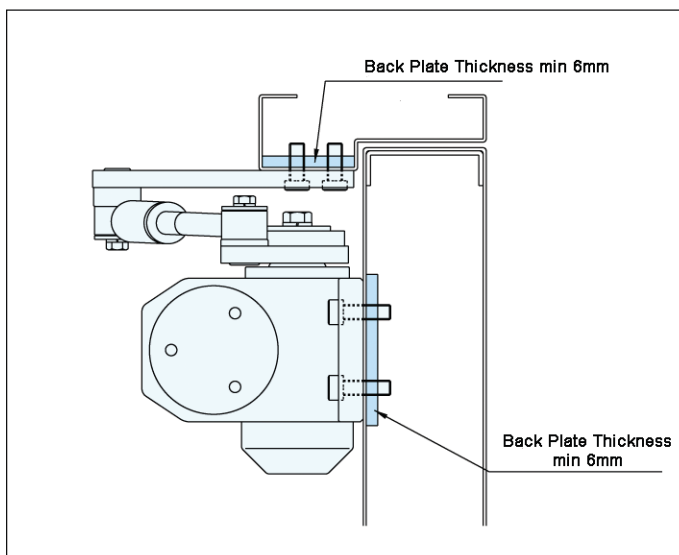
## BACK PLATE REQUIREMENTS

- It is important to fit the closer using backplates in the door and door frame as in illustrations below.

### ■ Standard Application



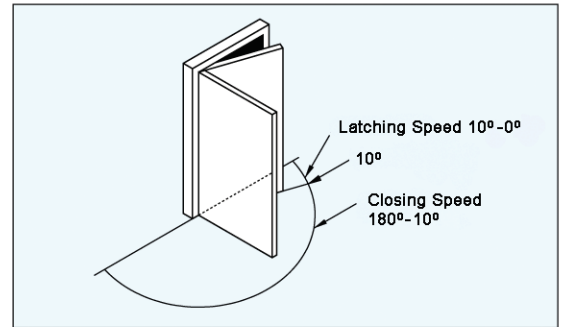
### ■ Parallel Arm Application



# H8 SERIES

## ADJUSTMENT

- The H8 Series Heavy Duty Door Closer features adjustable closing speed and adjustable (slower) latching speed.

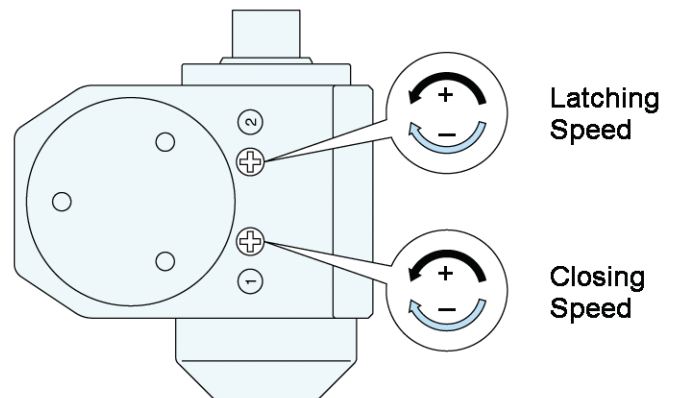


### Speed Adjustment

- Closing speed adjustment, and latching speed adjustment are individually adjusted as shown.

Closing time from 90deg. closing angle to limit kinetic energy of the door to 10J

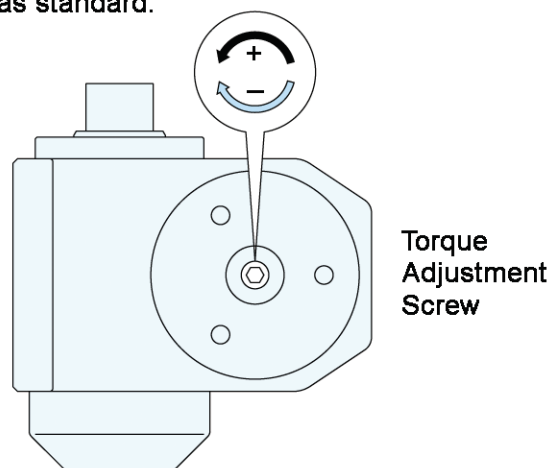
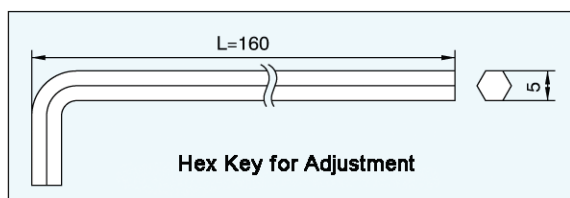
Door Size		Closing Time Seconds (Minimum)
Door Width (mm)	Door Weight (Kg)	
1500	140	7
2000	250	12
2500	350	17



### Torque Adjustment

- The closing force required can be adjusted depending on the size and weight of the door and the environment.
- Torque is adjusted to suit a door size of 2000 x 3000 (mm) as standard.
- Torque is adjusted using a 5mm Hex Key.

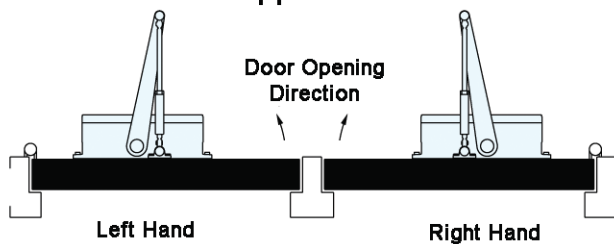
Application		Torque Adjustment Screw (rotation)
Door Width (mm)	Door Weight (Kg)	
1500	140	-5
2000	250	0
2500	350	+4.5



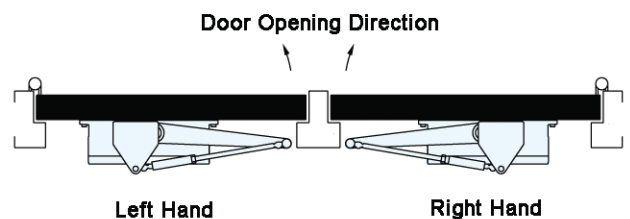
## Mounting and Selection

### Standard and Parallel Arm Application

#### ● Standard Application



#### ● Parallel Arm Application

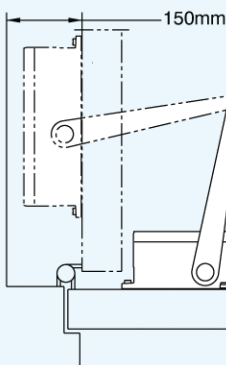


### Mounting Requirements

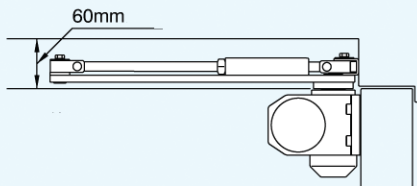
- Please note mounting requirements below.

#### ■ Mounting in Standard Configuration

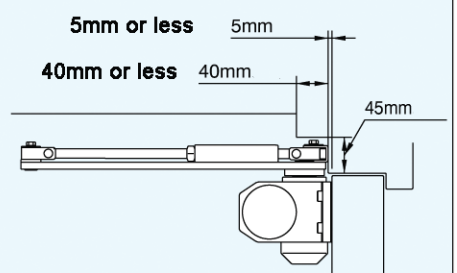
- In the case of 90° opening ensure this distance is 150mm minimum.



- 60mm minimum distance is required between ceiling and top of door frame



- The dimensions shown below are required for mounting



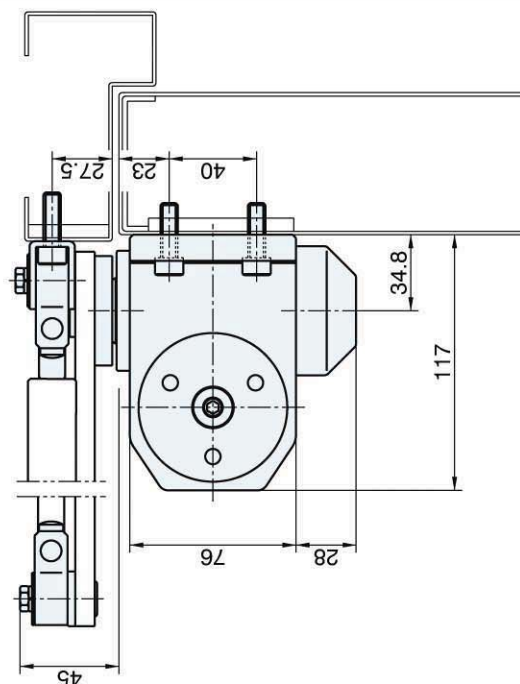
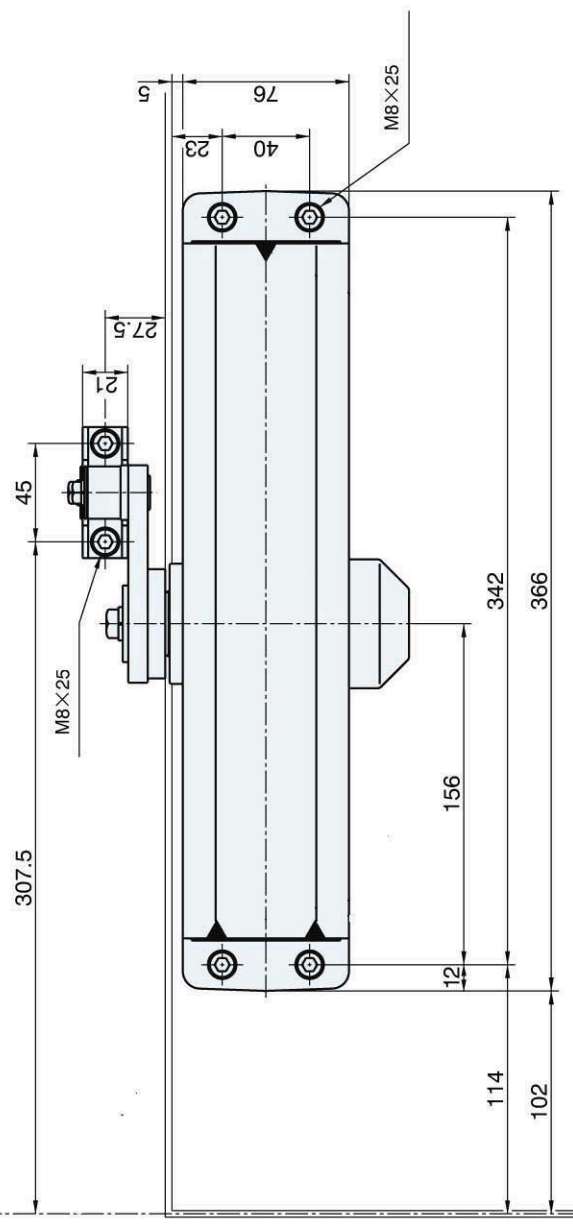
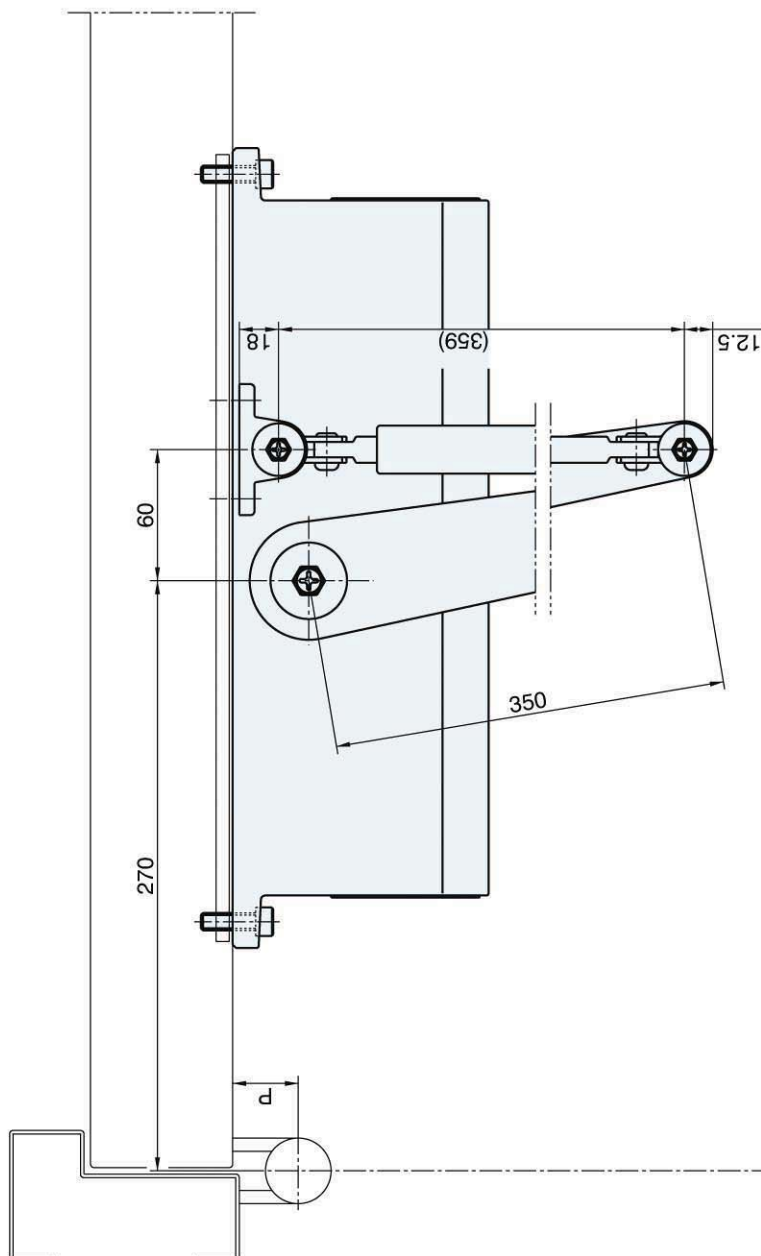
### Notes on Mounting and Handling

- The door closer body weighs 10Kg. Care is required when fitting to prevent damage.
- When mounting, ensure door is fixed in position.
- Ensure that mounting screws/bolts are tightened securely.
- Door stop is necessary to prevent damage to door, wall, or door closer.

# STANDARD APPLICATION

Ref.	Ref.	Door Width (mm)	Door Wt (Kg.)
H8V	H8VC	1500~2500	140~350

- If the distance "P" in the drawing is over 70mm 180 degree opening is not possible
- Back plate is used for door and frame
- Door stop is necessary to avoid damage to door, wall and door closer

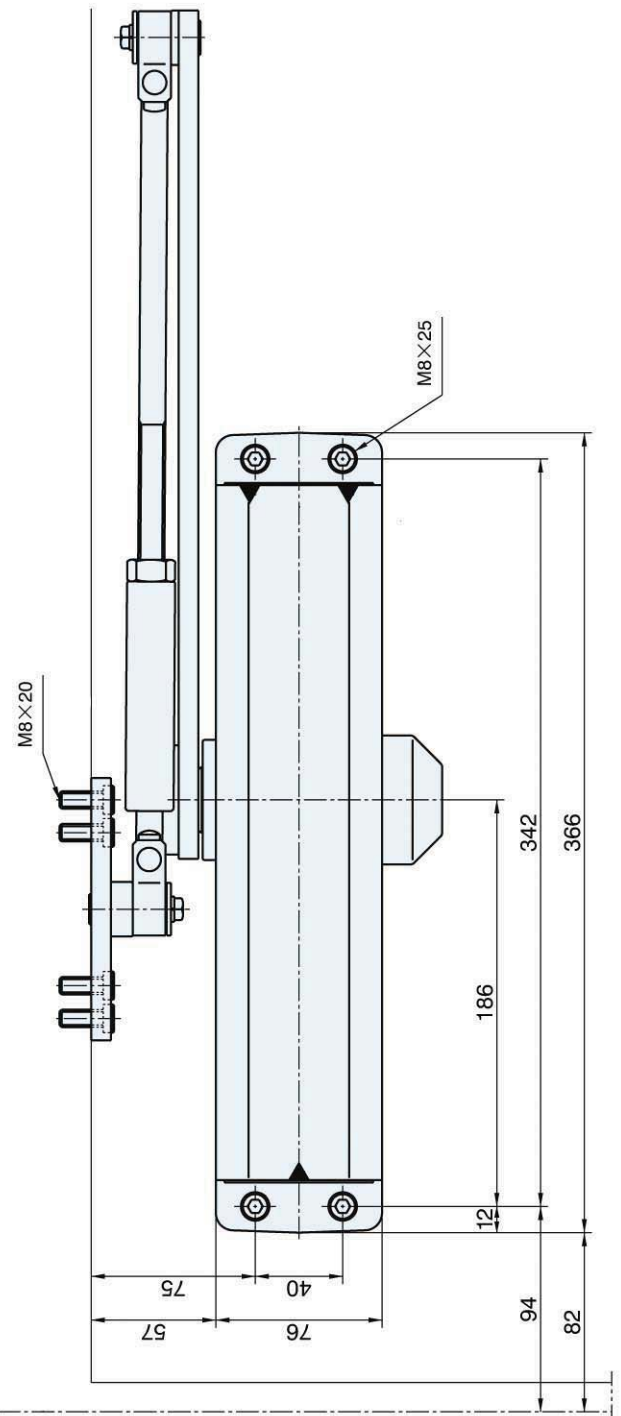
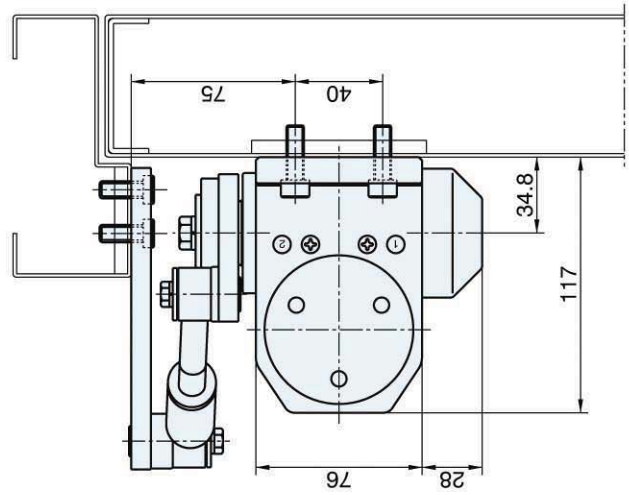
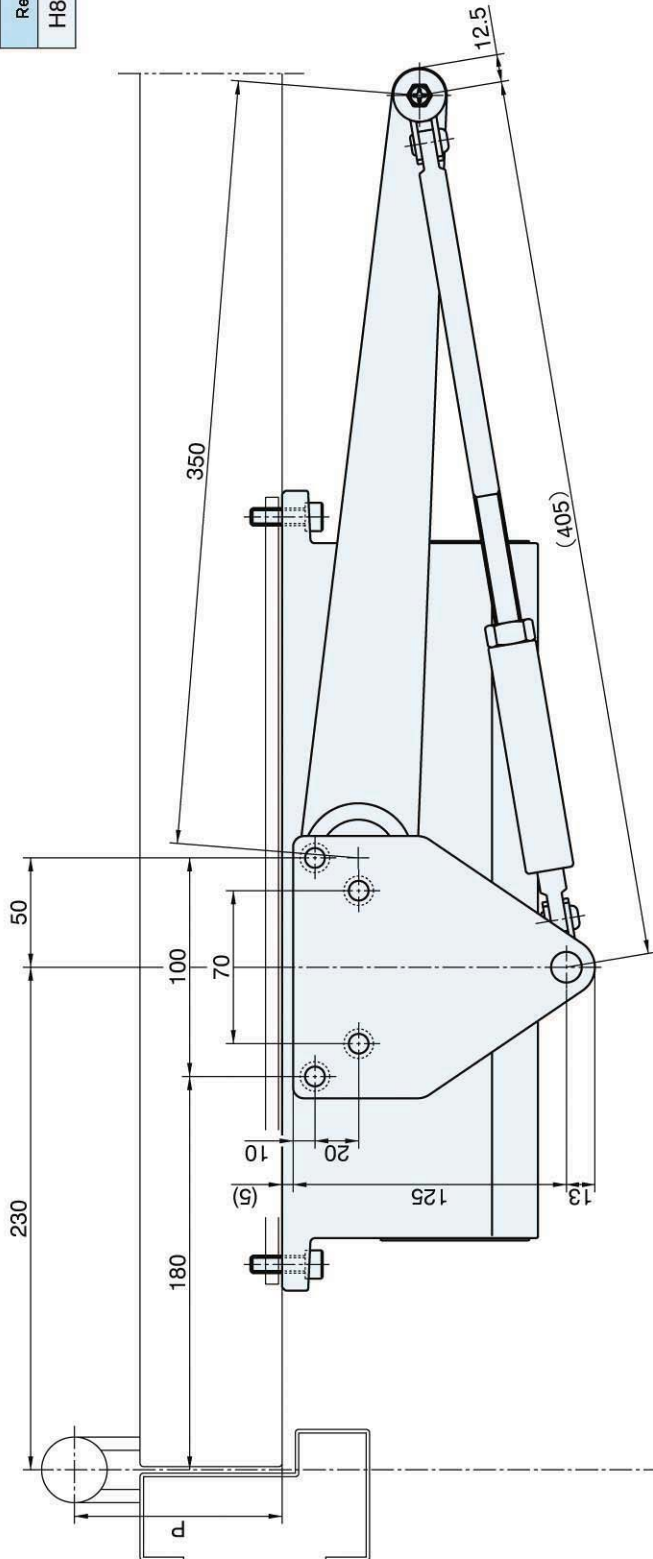




# PARALLEL ARM APPLICATION

Ref.	Ref.	Door Width (mm)	Door Wt (Kg.)
H8PV	H8PVC	1500~2500	140~350

- If the distance "P" in the drawing is over 110mm, 180 degree opening is not possible.
- Back Plate is used for door and frame
- Door Stop is necessary to avoid damage to door, wall and door closer.





**International Door Controls Ltd.  
Unit 23 Timmis Road  
Lye  
Stourbridge  
West Midlands  
DY9 7BQ**

**T: +44 (0)1384 893333  
F: +44 (0)1384 894837  
E: [info@int-door-controls.com](mailto:info@int-door-controls.com)  
W: [www.int-door-controls.com](http://www.int-door-controls.com)**

---

**RYOBI LIMITED**

5-2-8 Toshima, Kita-ku Tokyo 114-8518, Japan  
T: 81-3-3927-5536 F: 81-3-3927-5527

**RYOBI** is a registered trade mark of Ryobi Limited